

Advanced technology for your perfect smile!



Solutions for your highest expectations

Welcome to the future of dental technology!



Content

The Company	03
Scanner	04
CAD	05
CAM	06
Support and training	07
CORiTEC 340i	08
CORiTEC 440i/450i	10
CORiTEC 540i/550i	12
CORiTEC 750i	14
Milling burs, suction units	16
Sintering furnaces	17
Consumables	18

02



The company **imes-icore** stands for traditional corporate values like innovation and quality made in Germany. The aim is the development of individual CAD/CAM solutions that fit the need of the individual dental laboratory. As a subsidiary of **isel Germany AG** known for their quality milling machines and CAD/CAM components for the global markets imes-icore combines a long history in technology combined with experience in the global dental markets.

Our ambitious team of experienced CNC and dental specialists, our innovative high-tech development group along with our local dealerships will provide a new dimension in dental CAD/CAM solutions.

The faster and faster developing market for dental technology requires highly flexible CNC and dental production systems with increasing efficiency. In addition we experience increasing demand in the quality of software and innovative materials.

We have a very clear mission for the dental future: As a full-service company we will develop and utilize global alliances to realize your needs and our goals. We will

continuously increase the quality of our technologies and update our software tools and improve our materials and customer-oriented service.

Our currently five different dental CAD/CAM systems offer the optimum modular approach to the future demands of every dental lab.

Our coritec system delivers highest precision and fit and lots of room for development in all fields of today's dental prosthetics. With our products we offer a network of safety and productivity for the daily needs of our customers. Doing this we deliver this inspiring precision and quality to our customers.

Our high demand is supported by our program of 3shape scanners, DEKEMA furnaces, suction units and quality consumables; regardless if you use our Zirconia material, our waxes, resin materials or alloys.

Let our products and service inspire you!

imes-icore. Makes your smile perfect!



HighTech in the third dimension!

3shape D700™ + D710™ Impression Dental 3D Scanner

Applications

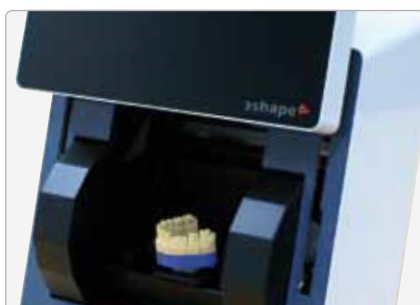
Scanning models (incl. upper & lower casts) using laser beams in combination with 2 cameras. The D700's unique features guaranty high-precision, reliable results continuously without any compromises: it's easy to use. The D700™ impression scanner includes the new unique scan software for optimal impression scans.

Technical Details

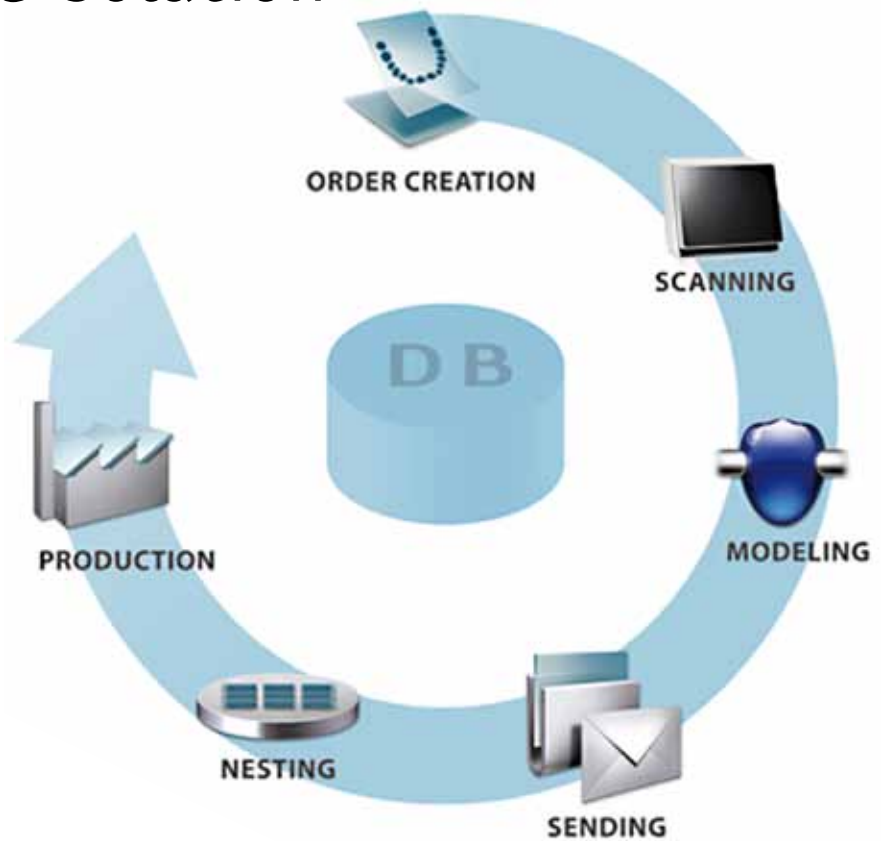
- » Supported Objects: Single dies, Inlay-Preparations, Bridge-Preparations up to 14 units, Opposing Model or bite, Wax-ups (single units and bridges)
- » Scanning time: app 15-25 sec/per die
- » Positioning of all objects fast and easy
- » Scanning procedure starts with a push of a button
- » Accuracy continuously at 20 µm or better
- » Calibration by user fast and easy
- » Automatic data processing supporting Dentaldesigner
- » 3 Axes (linear axis, rotation axis, swivel axis)

Technical specifications

- » 150 000 data points/per die
- » 34 x 29 x 33 cm (W x H x D)
- » Power consumption 17 W
- » Weight 14 kg
- » 2 Sensors/1 laser
- » Scanable area (cylinder) 80 x 70 mm (diameter x height)



The intuitive All-in-One Solution



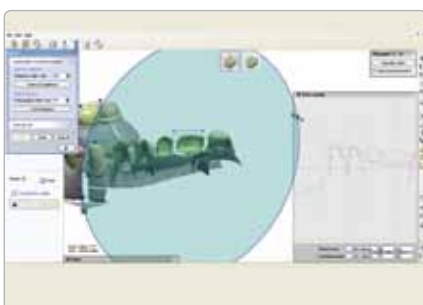
DentalDesigner®

The 3shape DentalDesigner® is a flexible and easy to operate 3D-Dental CAD-software solution, facilitating the design of all common dental restorations. An intuitive menu guides the user to the best possible result fast and easy.

Material-, dentist- and patient management are also integrated, as well as data input from other 3D-scanners.

Applications

- » For smaller and medium size laboratories even without a milling system. The digitally created cases can be sent to the milling center by a mouse click.
- » For labs of all sizes including milling centers
- » Crowns, bridges, telescopic crowns, fully contoured crowns, Wax-up crowns and bridges, bars, Conus crowns, individual abutments



Unlimited possibilities with precision!

iCAM V3 / V4 / V5 is a highly reputable CAD/CAM-System, which matured out of many years of development. iCAM V3 / V4 / V5 is unique, as it is fast and easy to use. It is the perfect user software for the automated fabrication of high end dental restorations.

iCAM V3 / V4 / V5 computes the milling data in a very short time, referring to optimized milling strategies developed in 8 years of constant improvements for all kind of dental materials and constructions.

Menu guided user interface and easy to operate surfaces as well as many fully automatized functions are resulting in a reliable and simple operation.

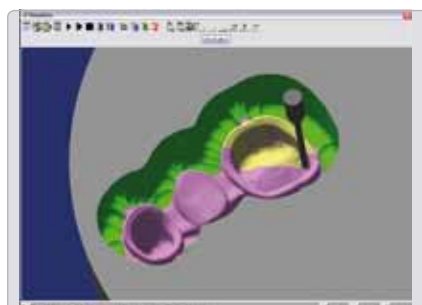
iCAM V3 / V4 / V5 guides the user automatically and safely through the entire milling program.

Behind the dental applikation there is a full open 3D-CAD/CAM-System, which is used by more than 3500 users in industry for construction and manufacturing. Also these functions are available.



Features

- » Disc Management
- » Easy to use
- » For all materials
- » Smart and materials savings due to disc-height optimization
- » Optimized milling strategies
- » Nesting
- » Easy setting of drops and connector bars
- » Simulation of the milling process
- » Combination of milling data
- » Quick calculations
- » Managing of reusable discs
- » Printing of Material Certificates
- » Up to 45 units per disc
- » Continues development



Reliable customer service!



Completely Local

We are offering the complete solution: Transportation, installation and training right at your location. This is the most elegant solution. Our service technicians deliver on time, your CAD/CAM system is installed properly and your operators are trained accordingly.

In-House

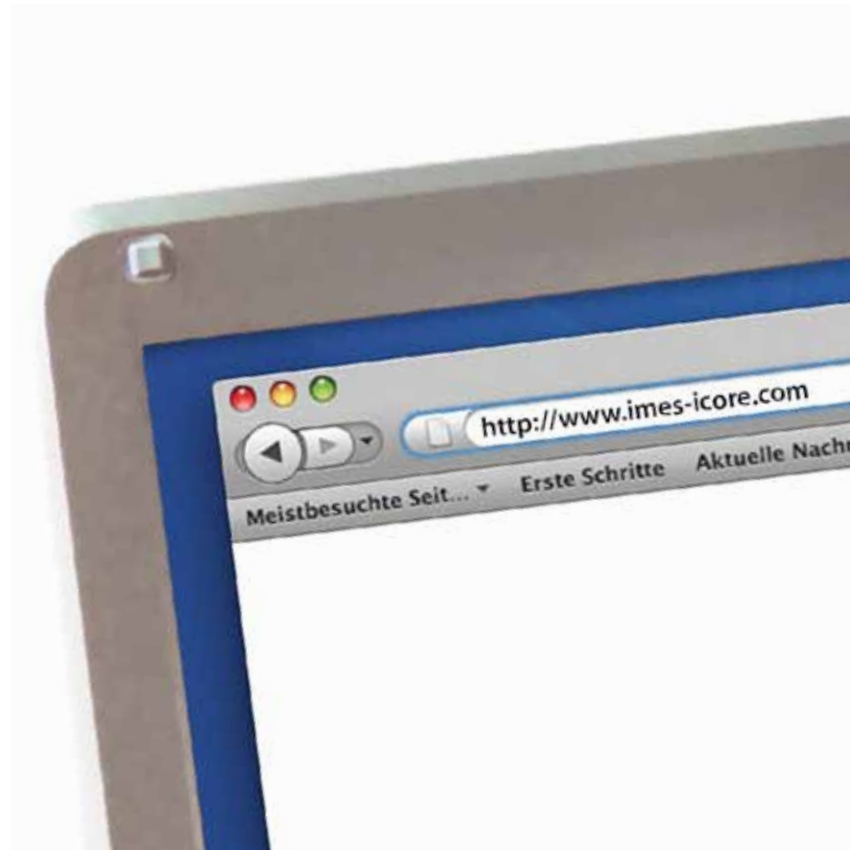
Of course do we offer in house training sessions. If you are interested in our systems and solutions please arrange an appointment with us.

Service & Support

Our highly qualified Service-Team is using future oriented support mechanisms like remote access via internet. This way common problems can be discussed together, e.g. explanation of the user surface, controlling the parameters of the milling machine, diagnosing problems and a lot more.

By experience most questions and problems can be solved remotely by this method. In case of still unsolved problems or defective parts we will immediately dispatch a technician to your location.

In the meantime we could do the milling for you. It is our aim to assure a trouble free, continuous operation of your system.



The compact class of dental automation!

The new coritec 340i from imes-icore opens up the road to dental automation for you. Space saving and very compact the coritec 340i emphasizes easy installation and multi-purpose usability.

Thanks to an automated 5x tool changer and 4-axes 45 units and more can be manufactured without changing the blank.

The coritec 340i is designed to dry-mill all important materials like Zirconium oxide, Aluminum oxide, resins and waxes.

Applications

Processing of all important dental materials by dry-milling with 4 axes

- » Zirconium oxide
- » Aluminum oxide
- » Resins like PMMA/Composite
- » Waxes

Usage

- » Mainly in small and medium size labs as a multipurpose production system
- » Complementing applications in larger labs and milling centers
- » Depending on the material app. 45 units out of a single disc

Technology

- » Rigid, industrial, heavy duty steel-aluminum table top design
- » Sliding closed aluminum door with an integrated security circuit
- » 4-Axes processing (NC-controlled)
- » DC-Servomotors on all axes
- » Fastest controller-technology for shortest milling-time
- » 1 workstation with NC-guided automatic blank holder
- » HF-spindle with up to 100 000 rpm
- » Cooling vent integrated into spindle holder
- » Suction with closed lid
- » Automatic 5-time direct tool-changer
- » Using tools with 3 mm shaft
- » Integrated high-precision tool length sensor
- » Control-PC with control software
- » 115 V/230 V-versions
- » Compressed air consumption app. 100 l/min (min. 7 bar)
- » Weight: 111 kg
- » 650 x 600 x 700 mm (W x D x H)





Enter into dental serial production!

The new coritec 440i/450i from imes-icore is your entry into the world of industrialized dental manufacturing. The coritec 440i/450i is convincing due to its rigid tabletop steel- aluminum construction.

Thanks to an automated 8-time tool changer and 4-axes 80 units or 5-axis 40 units and more can be manufactured without changing the blank.

The CORiTEC 440i/450i is designed to mill dry all important materials like Zirconium oxide, Aluminum oxide, resins and wax.

Applications

Processing of all important dental materials by dry-milling with 4 axis or 5 axis

- » Zirkonium oxide
- » Aluminum oxide
- » Resins like PMMA/Composite
- » Waxes

Usage

- » Mainly in labs of any size as an multi-purpose production system
- » Complementing applications in larger labs and milling centers
- » Depending on materials app. 80 units out of a single material or app. 40 units out of the same material

Technology

- » Rigid, industrial, heavy duty, steel-aluminum table top design
- » Sliding closed aluminum door with an integrated security circuit
- » 4-axis processing or 5-axis processing
- » AC-Servomotors on all axes
- » 2 workstations in an NC-guided automatic blank holder (4-axis)
- » 1 workstation in an NC-guided automatic blank holder (5-axis)
- » HF-spindle with up to 100.000 rpm
- » Cooling vent integrated into spindle holder
- » Suction with closed lid
- » Automatic 8x direct tool-changer 440i
- » Automatic 10x direct tool-changer 450i
- » Using tools with 3mm/6mm shaft
- » Integrated high-precision tool length sensor
- » Control-PC with control software
- » 115 V/230 V-versions
- » Compressed air consumption app. 100 l/min (min. 7 bar)
- » Weight 145 kg
- » 800 x 800 x 850 mm (W x D x H)



CORITEC 440i / 450i



The high performance class for dry and wet milling!

The new coritec 540i from imes-icore is a high-productivity solution for dental applications with 4 axes wet and/or dry milling. The coritec 540i fascinates with its multi-use production system and is meant for labs, which are also milling quite a lot of metal. Labs needing an efficient machine with 5 axes find their ideal unit with the coritec 550i.

Thanks to an automated 16-time tool changer 90 units and more can be manufactured without changing the blank.

The coritec 550i/540i is designed to mill dry all important materials like Zirconium oxide, Aluminum oxide, resins and wax as well as wet mill NP-alloys and Titanium.

Applications

Processing of all important dental materials by dry and wet milling with 4 or 5 axes

- » Zirkonium oxide
- » Aluminum oxide
- » Resins like PMMA/Composite
- » Wax
- » NP alloys
- » Ti and Ti-alloys

Usage

- » Mainly in larger size labs and milling centers as a multi-purpose production system, including milling metals
- » Depending on materials app 90 units out of a single material or 45 and more units out of the same material

Technology

- » Rigid, industrial, heavy duty, steel design with highly durable welded construction
- » Swiveling closed aluminum top with an integrated security circuit
- » High-technology controller-unit
- » 4-axes coritec 540i
- » 5-axes coritec 550i
- » AC-Servomotors on all axes
- » 2 workstations in an NC-guided automatic blank holder
- » Heavy duty 1.2 KW HF-spindle with up to 80 000 rpm
- » Air and water cooling vent integrated into spindle holder



CORITEC 540i/550i



- › Suction with closed lid
- › Cooling system with pump in stainless steel reservoir and filter
- › Automatic 8-time direct tool-changer

- › Using tools with 6 mm shaft
- › Integrated high-precision tool length sensor
- › Control-PC with control software
- › 115 V/230 V-versions

- › Compressed air consumption app. 100 l/min (min. 7 bar)
- › Weight 350 kg
- › 1050 x 840 x 1760 mm (W x D x H)



The Premium Class for highest expectations in production efficiency!

The new coritec 750i from imes-core is the ultimate high performance dental milling unit for wet and dry production with 5 axes operation (3+2 processing). The coritec 750i amazes with precision and productivity. This is the high-tech-unit for labs with premium expectations in quality, productivity and flexibility.

Thanks to an automated 16x direct tool-changer with extremely powerful digital linear motors on all axes with integrated Heidenhain length measurement systems all wishes

the coritec 750i was developed for high productivity production of all important materials, wet and dry milling, like Zirconium oxide, Aluminum oxide, resins and wax as well as NP-alloys and Titanium.

Applications

Milling of all important materials, wet and dry, with 5 axes (3+2 mode). With highest precision and speed.

- » Zirconium oxide
- » Aluminum oxide
- » Resins like PMMA/Composite
- » Wax
- » NP alloys
- » Ti and Ti-alloys

Usage

- » Mainly in larger size labs and milling centers as an multi-purpose production system, including milling metals
- » Depending on materials app 90 units out of a single material or 45 and more units out of the same material

Technology

- » Extremely rigid and absorbing granite chassis, strengthened with precision-welded steel structure
- » Sliding closed lid with an integrated security circuit
- » Powerful digital linear motors and AC servo drives with integrated Heidenhain length measurement system
- » 5 axes (3+2 mode) and 5 axes simultaneous
- » 2 workstations in an NC-guided automatic blank holder
- » Heavy duty HF-spindle with up to 80000 rpm
- » Air and water cooling vent integrated into spindle holder





- › Suction with closed lid
- › Cooling system with Pump in stainless steel reservoir and filter
- › Automatic 16-time direct tool changer
- › Using tools with 6 mm shaft

- › Integrated high-precision tool length sensor
- › Control-PC with control software
- › 380 V-versions

- › Compressed air consumption app. 150 l/min (min. 7 bar)
- › Weight 1200 kg
- › 1400 x 1220 x 2000 mm (WxDxH)



Convincing technology for optimum results!

For every type of milling machine and every material specifically developed and tested milling burrs with optimum properties.

The milling burr is the key contact point between your milling machine and the dental material and therefore highly important for your success. Cutting parameters of the burr and the settings of the milling machine have to match perfectly for optimum results. With our combined know how in milling technology and materials science we have further optimized the process for maximum quality and productivity.

All our suction units require very little maintenance and are built for long life expectancy. All units were developed especially for the requirements of our milling machines. The internal Teflon-coated filter cartridges are connected to an automated self-cleaning mechanism and are therefore maintenance-free. The iVAC2 is built for heavy duty continuous operation.



Milling burrs

- » Manufactured from micro-fine grain carbides < 0,4 μm
- » Hardness > 1690 HV30
- » Bending strength > 3500 N/mm²

Milling burrs



iVAC2

- » Self-cleaning automation
- » Dust compartment with 18.3 l capacity
- » Automated control through milling machine
- » iVAC eco: Compact suction unit with disposable filter bags

Teflon filter cartridge



iVACeco suction unit



Sintering furnaces



Sintering of Zirconia and Alumina framework materials for high strength and high density.

Please note: iSINT-furnaces not available in the US.



DEKEMA Austromat μ SiC – Hightech meets Design

- » Temperatures up to 1600°C
- » Sintering of more than 80 units in 3 layers
- » Approved AUTODRAY- system guarantees precise drying from 50°C and fast cooling from 1000°C
- » Shortening of average sintering time by about 30%
- » Selection, start and control of 10 stored programs

USB- Terminal for the DEKEMA Austromat μ SiC



iSINT M2 – The Classic

- » Temperatures up to 1600°C
- » Sintering of up to 80 units in 3 layers
- » Touch panel
- » Selection, start and control of 6 stored programs

Graphic touch panel of iSINT M2 sintering furnace



iSINT P1 – Entry level furnace

- » Temperatures up to 1600°C
- » Sintering of more than 20 units on 2 layers
- » Easy handling
- » Economic efficiency

Sintering on 3 layers with the DEKEMA Austromat μ SiC



Perfect precision from excellent materials!



We offer your customers and patients the assurance that you have used the highest quality materials. Therefore we will offer you the option of a Quality Certificate for our medical materials.

This certificate includes all relevant information about the restoration.

Our high quality materials with their excellent properties guarantee results supporting your aesthetic results and longevity in a perfect match: Biocompatibility, Strength, and Safety.



CoCr Disc



PMMA-Disc



Wax Disc



Coloring liquid



Sintering perls



Zr Disc



imes-icore materials	available dimensions d x h [mm] / colour	key benefits	indications
CORiTEC Zr Disc	98 x 10 98 x 12 98 x 16 98 x 18 98 x 20 98 x 25	<ul style="list-style-type: none"> » full-ceramic scaffolding material for highest aesthetic claims » extremely high bending strength values » high hardness » excellent mechanical qualities » very well machinable » perfect fitting of all restorations up to large bridges » unlimited biocompatibility » resistance to ageing 	For all kinds of restorations up to 16 units
CORiTEC Zr eco Disc	98 x 12	<ul style="list-style-type: none"> » full-ceramic scaffolding material for highest aesthetic claims » large indication spectrum » excellent mechanical properties » perfect fitting of all restorations » unlimited biocompatibility » resistance to ageing 	<ul style="list-style-type: none"> » copings » bridges up to 3 units » abutments » primary crowns
CORiTEC CoCr Disc	98 x 10 98 x 12 98 x 15	<ul style="list-style-type: none"> » excellent mechanical properties » very good thermal properties » perfect passport exactness of all restorations up to huge bridges » unlimited biocompatibility » high corrosion resistance 	<ul style="list-style-type: none"> » copings » crowns » bridges up to 16 units » full-ceramic crowns and bridges » crowns and telescoping » primary/ secondary crowns » constructions with implants
CORiTEC Ti Disc (Gr. 2)	98 x 10 98 x 12	<ul style="list-style-type: none"> » excellent mechanical properties » high hardness and bending strength values » perfect fitting of all restorations up to large bridges » high corrosion resistance 	<ul style="list-style-type: none"> » crowns for front and molars » for all kind of restorations up to 16 units
CORiTEC Wax Disc	98 x 18 98 x 20 grey	<ul style="list-style-type: none"> » very well machinable » cauterisation without remains » speedable » very high economic efficiency 	do you use CORiTEC Wax Disc for the Lost-Wax technology or Wax-Up's
Future Developments		<ul style="list-style-type: none"> » glass ceramic material 	



The CORiTEC PMMA Colour Set

The colour pallet at the PMMA range was extended to 16 colours by new developments and innovative acting. The perfect basis for your temporary artificial prosthesis. Additionally the set includes four different bleached colours (BL1-BL4) and one transparent Disc.

imes-icore materials	available dimensions d x h [mm] / colour	key benefits	indications
CORiTEC PMMA Colour Set	98 x 20/ A1 - A4 B1 - B4 C1 - C4 D2 - D4 BL1 - BL4 (bleached) clear	<ul style="list-style-type: none"> » excellent mechanical properties » very well machining » aesthetic colour effect » very good suitability for allergy sufferers » very high economic efficiency 	<ul style="list-style-type: none"> » temporary crowns » temporary bridges » up to 3 units » temporary solutions for the implantology

CORISHADE colour liquid

It is also possible to receive individual colours or colour combinations. The product range is rounded off by the CORISHADE colour set for zirconium dioxide frames. With this set one can cover the whole spread natural teeth colours.

	key benefits	indications
CORISHADE colour liquid	<ul style="list-style-type: none"> » aesthetic colour effects » it is easy to get the common spectrum of natural teeth colours through reduce the liquid » no negative influence of the mechanical properties » gingival no white borderline » perfekte colouring of all kinds of constructions made of CORiTEC Zr 	for all kind of restorations up to 16 units

imes-icore sets a new standard with its future-orientated technology. The optimum product line of equipment, software and consumables combined with ambitious service and support guarantee highest productivity and quality.

imes-icore. Makes your smile perfect!



isel[®] France

Des composants aux Systèmes

BP 41 - ZAC de la prévôté - 4 rue des côtes d'Orval - F-78550 - HOUDAN
tel: +33(0) 130 461 201 fax: +33(0) 130 596 932 email: info@isel.fr

